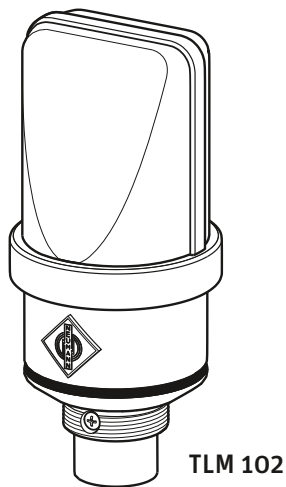
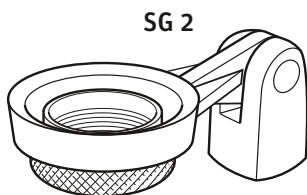


TLM 102

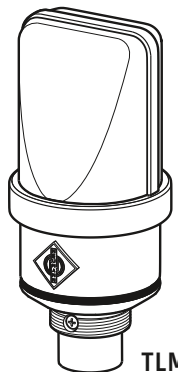


TLM 102

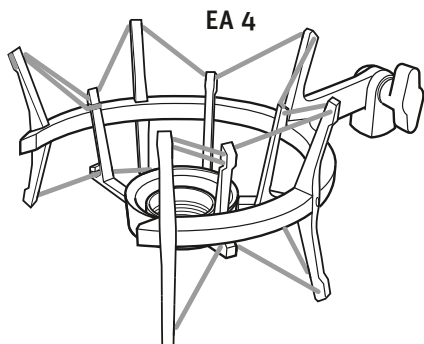


SG 2

Studio Set



TLM 102



EA 4



NEUMANN.BERLIN

TLM 102



- Quick Guide
- Kurzanleitung
- Guide rapide
- Guida rapida
- Guía de inicio rápido
- Guia rápido
- Beknopte handleiding
- Krótka instrukcja obsługi
- Snabbguide
- Kort vejledning
- Pikaohje
- Γρήγορος οδηγός
- Kısa Kılavuz
- Краткая инструкция
- 快速指南
- クイックガイド
- 퀵 가이드

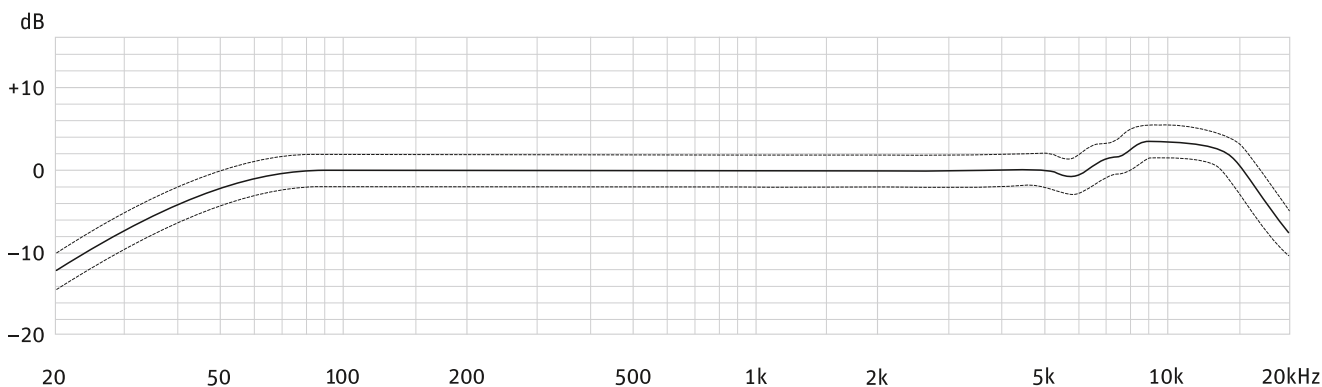
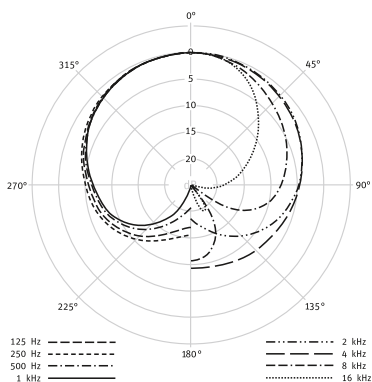
For details on further optional accessories see www.neumann.com

GEORG NEUMANN GMBH · LEIPZIGER STR. 112 · 10117 BERLIN · GERMANY
TEL +49 (0)30 / 41 77 24 -0 · FAX -50 · HEADOFFICE@NEUMANN.COM · WWW.NEUMANN.COM



Instruction manual | Bedienungsanleitung | Notice d'emploi | Istruzioni per l'uso | Instrucciones de manejo | Manual de instruções | Gebruiksaanwijzing | Instrukcja obsługi | Bruksanvisning | Betjeningsvejledning | Käyttöohje | Οδηγίες λειτουργίας | Kullanım kılavuzu | Инструкция по эксплуатации | 使用说明书 |取扱説明書 | 사용 설명서 |

www.neumann.com | TLM 102

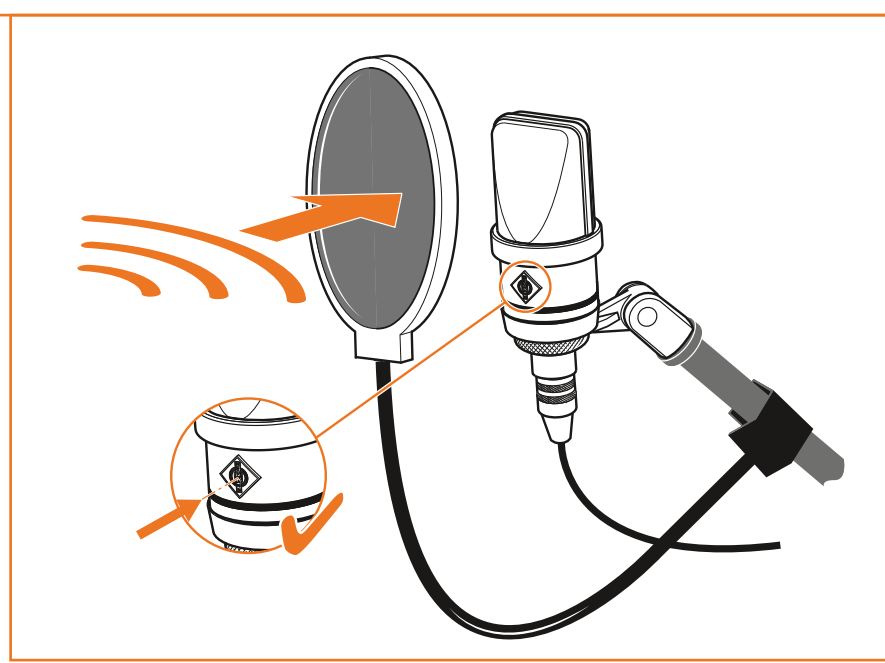
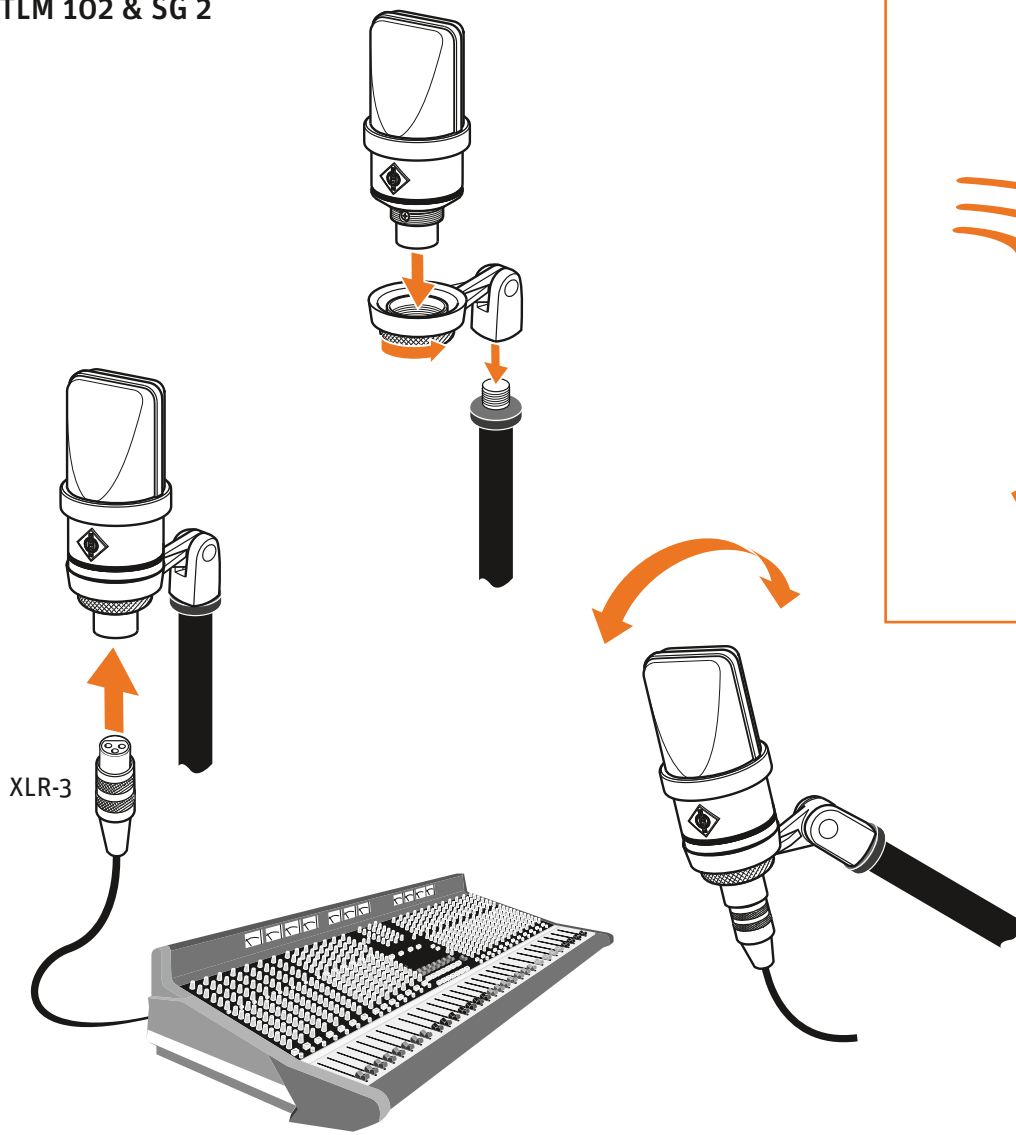


Specifications

Acoustic operating principle	Pressure gradient transducer
Directional pattern	Cardioid
Frequency range	20 Hz - 20 kHz
Sensitivity at 1 kHz into 1 kΩ	11 mV/Pa \pm -39 dBV \pm 1 dB
Rated impedance	50 Ω
Rated load impedance	1000 Ω
Signal-to-noise ratio, CCIR ¹⁾ (rel. 94 dB SPL)	73 dB
Signal-to-noise ratio, A-weighted ¹⁾ (rel. 94 dB SPL)	82 dB
Equivalent noise level, CCIR ¹⁾	21 dB
Equivalent noise level, A-weighted ¹⁾	12 dB-A
Maximum SPL for THD \leq 0.5% ²⁾	144 dB
Maximum output voltage	13 dBu
Supply voltage (P48, IEC 61938)	48 V \pm 4 V
Current consumption (P48, IEC 61938)	3.5 mA
Matching connector	XLR3F
Weight	210 g
Dimensions (diameter / length)	\varnothing 52 mm / 116 mm
Operating temperature range	0 °C - +70 °C (32 °F - 158 °F)
Storage temperature range	-20 °C - +70 °C (-4 °F - 158 °F)
Humidity range	max. 90 % at +20 °C

¹⁾ according to IEC 60268-1; CCIR-weighting according to CCIR 468-3, quasi peak; A-weighting according to IEC 61672-1, RMS
²⁾ measured as equivalent el. input signal

TLM 102 & SG 2



TLM 102 & EA 4

